



# Mould Manufacturing Technology Transfer

---

BUSINESS PACKAGE



Finnish concrete element equipment

---

# Content

---

About Finninno

Main products

Technology Transfer

Contact Information

# About Finninno

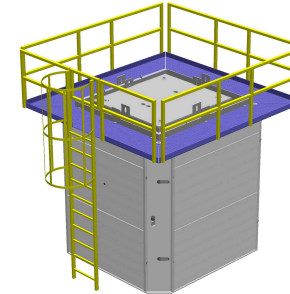
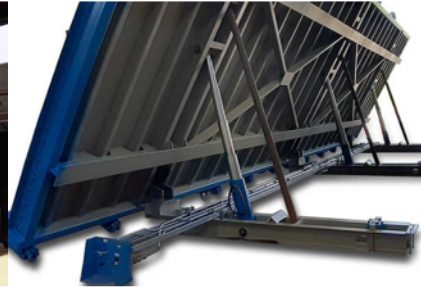
---

Finninno Oy is a Finnish company whose core competence comprises innovative products for more cost-effective production of precast concrete sections, and production consultation for the concrete products industry.

Our roots go back to 1994, when we started our operations under the name Specifinn Oy in Kotka, Finland. Solid expertise in the marketing and manufacture of precast concrete sections together with the development of innovations and patented solutions have been our hallmarks to this day.



# Main products



## Elevator shaft moulds

Elevator shaft sections with extreme dimensional accuracy enable easy installation and faster work steps, and ensure that construction work at the site is sure to run smoothly.

## Battery moulds

High-quality support walls and partition walls, which can be equipped with water-circulating heating piping, enable fast and efficient precast section production.

## Tilting tables

Tailor-made, strong-framed tilt moulds enable the efficient manufacture of diverse precast concrete sections.

## Bathroom moulds

The bathroom mould speeds up the production.

## Mobile precast concrete element factories

An excellent solution for efficient housing construction in suburban areas. The solution achieves goods flows that are logistically highly efficient.



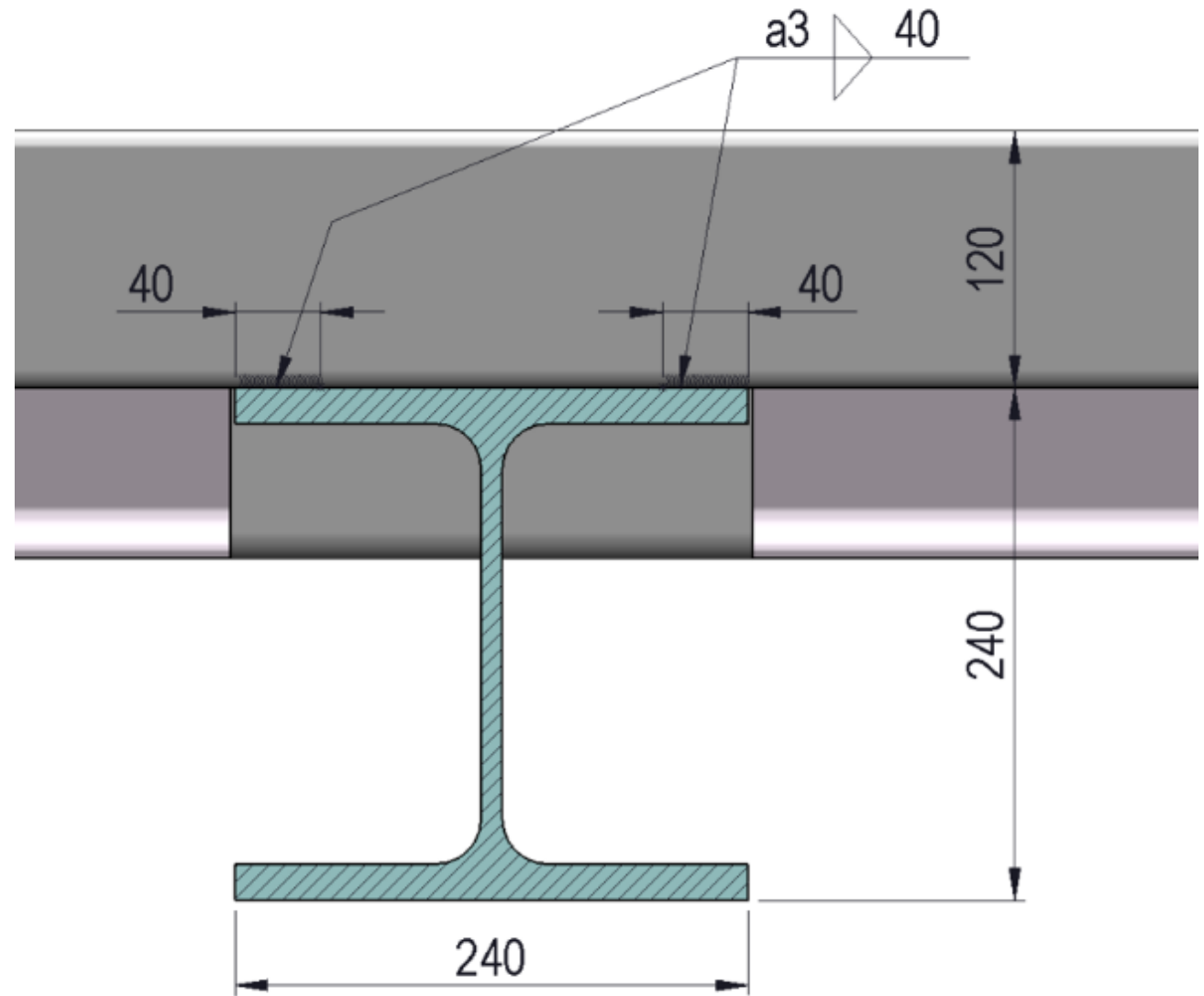
# Technology Transfer Package

---

- We offer to transfer our knowledge, technology and know-how to your company - which will give you the capabilities to manufacture concrete element steel moulds for your customers
- Basic description of the package
- Benefits
- Your obligations
- Costs

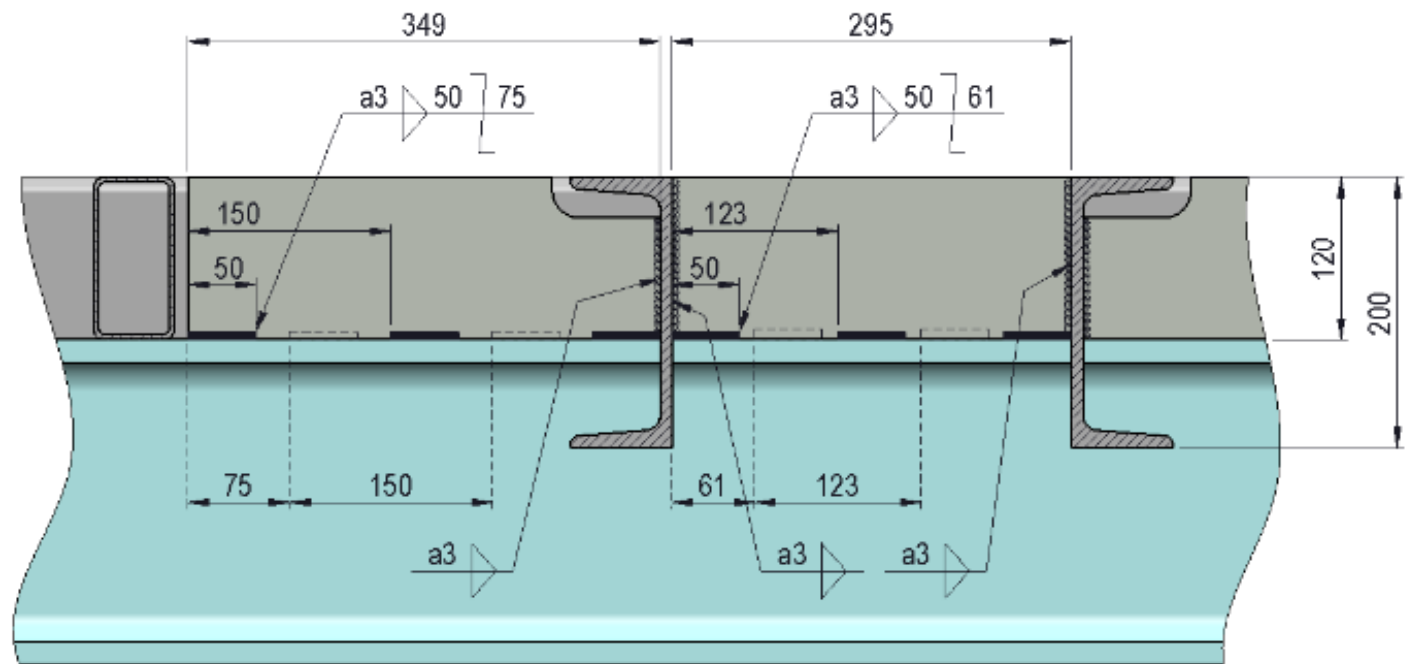
# What's in the package?

- Detailed SolidWorks construction drawings for the agreed technology
- Detailed mould drawings for each of the needed moulds, for current and future projects
- Manufacturing supervision and training
- Price estimate for the complete project implementation.
- Consulting on all issues arising from first production run.



# What's in the package?

1. Table mould production facility and manufacturing equipment
2. Preparation of the surface plate
  - 2.1 Alternative method / Preparation of the surface plate
3. Making a table mould frame
4. Attaching the table mould body to the surface plate
5. Installing chassis beams and hydraulic cylinders
6. Installation of sides and tip rail
7. Checking the quality of the finished table mold
8. Table mold painting
9. Installation of vibrating cylinders and hydraulics
10. Spot painting and other finishing



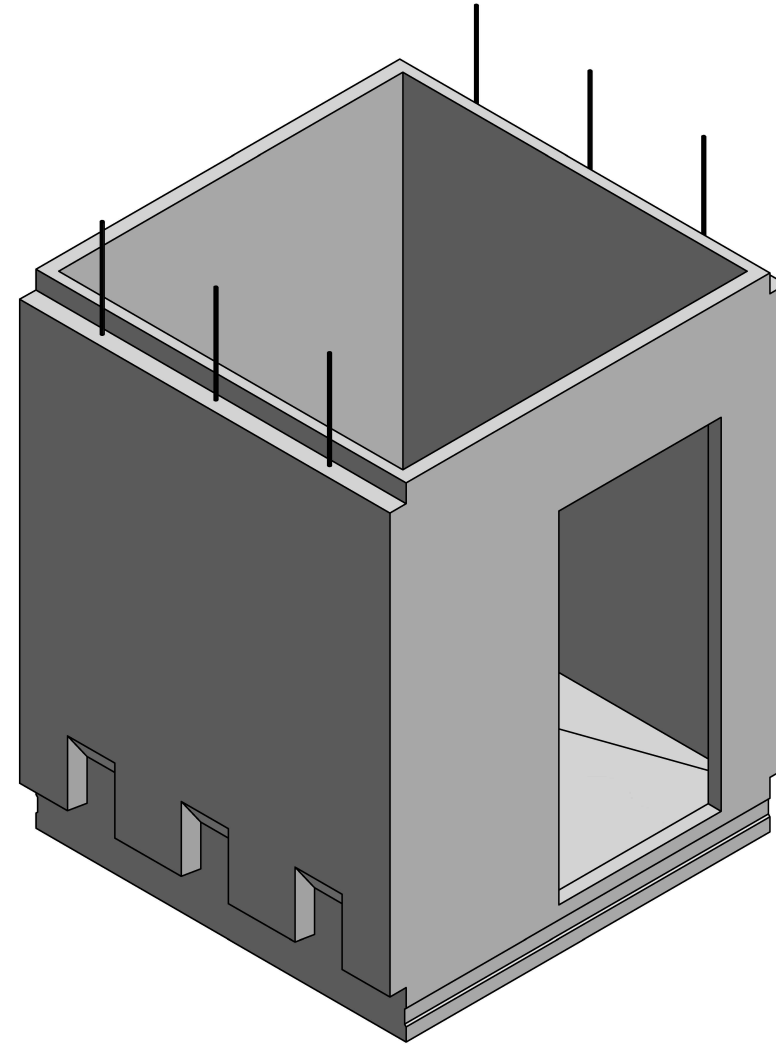
*Example from tilting table package*



# Bathroom mould package

---

1. Bathroom mould production facilities and equipment
2. General description of the production line for bathroom moulds (3D image)
3. Mould plates
4. Manufacture of bottom plate and lower body
5. Cover plate
6. Assembly of shafts
7. Manufacture of work platform and corner protection
8. Stairs
9. Shaft lifters
10. Concreting guards for shafts
11. Manufacture of inner mould sections
12. Manufacture of outer mould sections
13. Assembly of bathroom mould
14. Packing of mould for transport



# Benefits

---



Benefit from  
Finninno's 30 years  
experience in the  
pre-cast concrete  
mould industry



Our products are  
tried and tested -  
no need for you to  
develop your own  
technology.



Instantly have  
access to all the  
fabrication  
drawings you  
need to start.  
  
Future mould  
drawings from our  
designers



Training and  
support during  
start of production



You know your  
market! Quickly  
develop sales  
using our  
technology -  
produced by you.



# Your requirements

---

- Production building approximately 1.000m<sup>2</sup>
- 2 x overhead cranes 10T lifting capacity with 6m free lifting height
- Working platforms, tools, TIG welding equipment
- Labour 6 people/shift
- Raw materials to Finninno specification

# Your estimated costs

---

Production site - Depending on size and location

2 x overhead cranes - €50.000

Tools and equipment - €50.000

Technology package - €50.000

Materials - Depending on products

Labour and overhead - Depending on location

# Contact us for more information

---

**FINNINNO**  
INNOVOIMAA ● INNOPOWER



Heikki Pakisjärvi  
**Managing Director**  
[heikki.pakisjarvi@finninno.fi](mailto:heikki.pakisjarvi@finninno.fi)  
+358 44 771 2301



Gavin Cruickshank  
**Project Director**  
[info@finninno.fi](mailto:info@finninno.fi)  
+358 50 3734210

[www.finninno.fi](http://www.finninno.fi)  
Rautatiekatu 2, 48100 KOTKA  
FINLAND